

# MONTHLY MEMBERSHIP PROGRESS REPORT

LOCATION INDIA

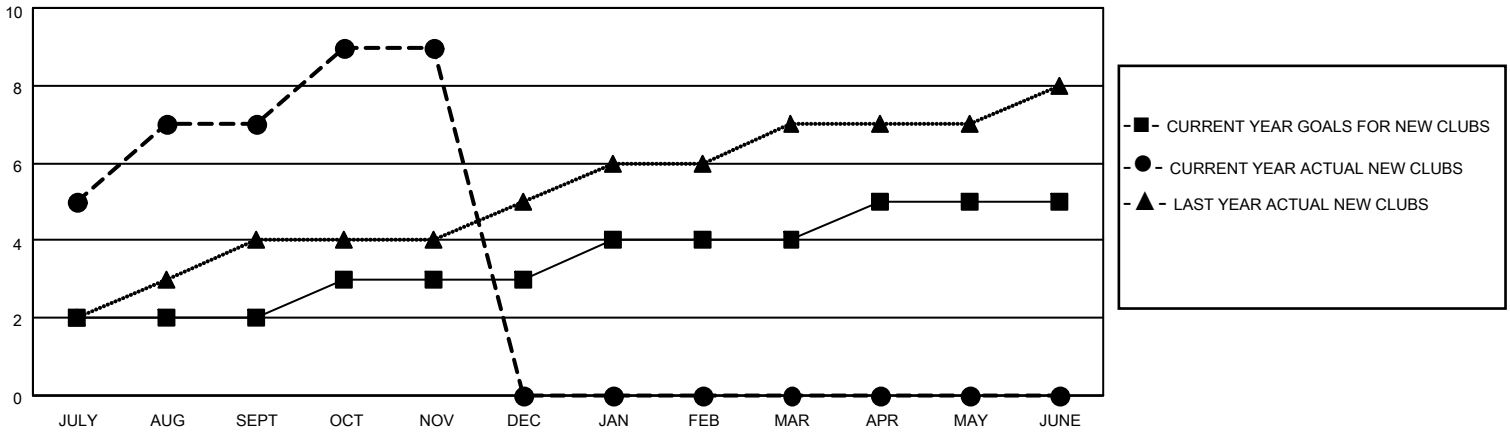
District 3231A2

Results as of: 11/30/2021

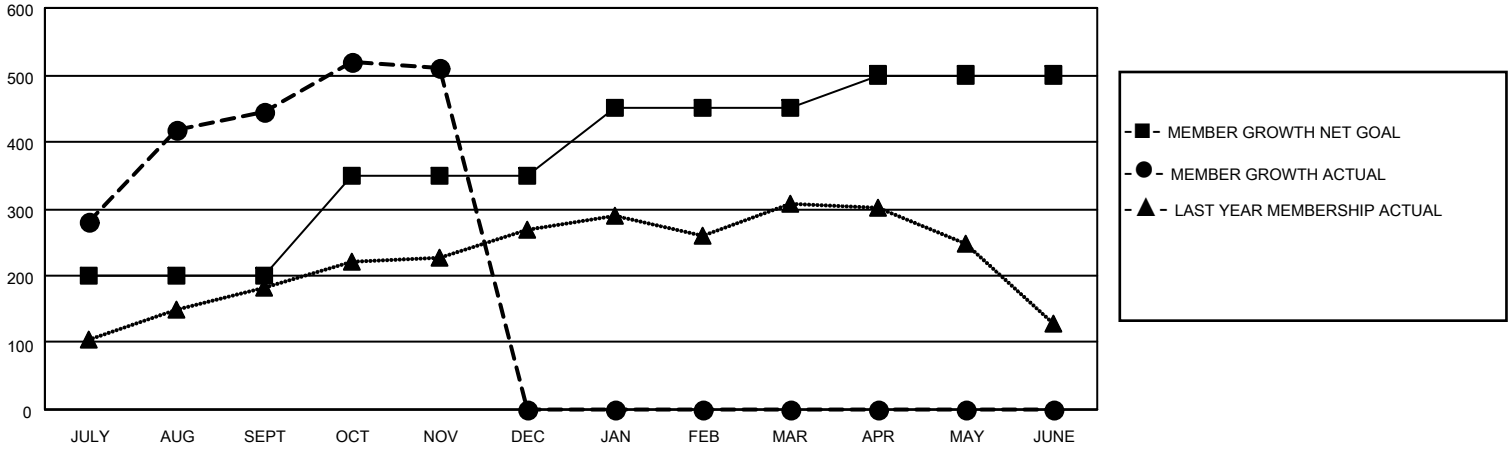
Clubs			
RESULTS FOR 2021-2022			
QUARTER	NEW CLUB GOAL	NEW CLUBS	DROPPED CLUBS
JULY/AUG/SEPT	2	7	2
OCT/NOV/DEC	1	2	0
JAN/FEB/MAR	1	0	0
APR/MAY/JUNE	1	0	0

Members			
RESULTS FOR 2021-2022			
QUARTER	MEMBER GROWTH NET GOAL	MEMBER GROWTH ACTUAL	DROPPED MEMBERS ACTUAL (including transfers)
JULY/AUG/SEPT	200	550	78
OCT/NOV/DEC	150	135	56
JAN/FEB/MAR	100	0	0
APR/MAY/JUNE	50	0	0

**GOALS AND ACTUAL NEW CLUBS CUMULATIVE**



**GOALS AND ACTUAL MEMBERS CUMULATIVE**



DROPPED CLUBS: 2	
<b>DROPPED MEMBERS</b>	
DECEASED	8
CLUB CANCELLED	43
OTHER	83
<b>TOTAL</b>	<b>134</b>

75 CLUBS OF 108 ADDED 1 OR MORE NEW MEMBERS

[CLICK HERE FOR CUMULATIVE MEMBERSHIP DATA](#)

<u>GENDER DISTRIBUTION</u>	
MALE	2,529 (62.75%)
FEMALE	1,501 (37.25%)
NON BINARY	0 (0.00%)
PREFER NOT TO ANSWER	0 (0.00%)
<hr/>	
TOTAL FAMILY UNIT MEMBERS	2,067
<hr/>	
FAMILY MEMBERS PAYING HALF DUES	1,096